

# Seasonal Climate Outlook





# **SEYCHELLES METEOROLOGICAL AUTHORITY**

## **June-July-August (JJA) 2022 Seasonal Climate Outlook**



### **Table of Contents**

<b>1. March-April-May (MAM) 2022 Performance .....</b>	<b>1</b>
<b>2. April-May-June (AMJ) 2022 Performance .....</b>	<b>1</b>
<b>3. Oceanic Patterns 2022 .....</b>	<b>2</b>
<b>4. June-July-August Rainfall Seasonal Forecast 2022 .....</b>	<b>4</b>



# SEYCHELLES METEOROLOGICAL AUTHORITY

## June-July-August (JJA) 2022 Seasonal Climate Outlook



### 1. March-April-May (MAM) 2022 Performance

Table 1 below shows that the rainfall recorded during March-April-May (MAM) 2022 season was strongly Above-Normal over all areas.

*Table 1: March-April-May (MAM) 2022 Performance*

Sations	MAM	Long Term Mean	BN	AN	BN?	AN?	Anomalies
Anse-Boileau	912.1	540.2	405.1	675.2	NO	YES	371.9
Anse-Forbans	1148.3	460.5	345.4	575.7	NO	YES	687.8
Anse-Royale-Waterwork-PUC	1138.5	545.7	409.3	682.1	NO	YES	592.8
Belombre	1074.7	633.2	474.9	791.5	NO	YES	441.5
Cascade-Waterwork-PUC	1073.7	642.6	482.0	803.3	NO	YES	431.1
Fairview-La-Misere	1226.6	727.3	545.5	909.2	NO	YES	499.3
Hermitage-Waterwork-PUC	1161.5	622.5	466.9	778.1	NO	YES	539.0
La-Gogue-Waterwork-PUC	803.8	484.7	363.5	605.8	NO	YES	319.1
Le-Niol-Waterwork-PUC	1126.2	705.2	528.9	881.5	NO	YES	421.0
Praslin-Airstrip	576.3	429.6	322.2	537.0	NO	YES	146.7
Quatre-Bornes-Police-Station	750.6	381.1	285.8	476.4	NO	YES	369.5
Rochon-Waterwork-PUC	1363.9	711.9	533.9	889.8	NO	YES	652.0
Seychelles-International-Airport	989.1	546.7	410.0	683.3	NO	YES	442.4
Tea-Factory-Morne-Blanc	1067.3	631.2	473.4	789.0	NO	YES	436.1

### 2. April-May-June (AMJ) 2022 Performance

Table 2 below shows how the April-May-June (AMJ) 2022 season is performing so far, two months into the season. All the 14 stations considered for seasonal forecasting indicate drier than average conditions with some strong negative anomalies.

*Table 2: 2. April-May-June (AMJ) 2022 Performance*

STATIONS	APR TOTAL	MAY TOTAL	APR+MAY	AMJ LONG TERM MEAN	ANOMALIES
Anse-Boileau	140.5	215.9	356.4	493.4	-137.0
Anse-Forbans	133	148.7	281.7	407.3	-125.6
Anse-Royale-Waterwork-PUC	184.4	219.7	404.1	485.7	-81.6
Belombre	139.8	196.4	336.2	565.0	-228.8
Cascade-Waterwork-PUC	174.3	266.6	440.9	561.1	-120.2
Fairview-La-Misere	205.1	199.5	404.6	628.5	-223.9
Hermitage-Waterwork-PUC	166.8	234.8	401.6	509.8	-108.2
La-Gogue-Waterwork-PUC	98	183.9	281.9	380.5	-98.6
Le-Niol-Waterwork-PUC	141.6	209.1	350.7	631.1	-280.4
Praslin-Airstrip	129.5	185.6	315.1	362.3	-47.2
Quatre-Bornes-Police-Station	86.9	128.7	215.6	352.2	-136.6
Rochon-Waterwork-PUC	169.6	211.4	381	601.9	-220.9
Seychelles-International-Airport	155.6	254.1	409.7	461.0	-51.3
Tea-Factory-Morne-Blanc	112.9	147.2	260.1	534.7	-274.6

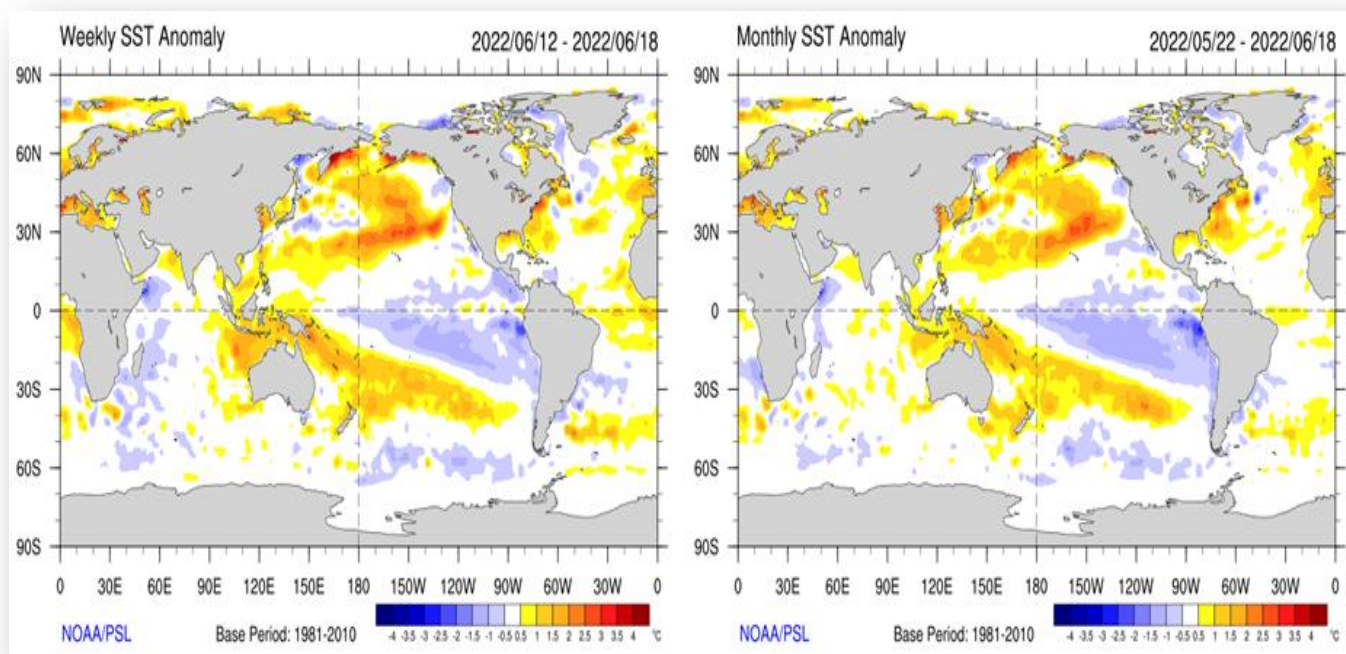
### 3. Oceanic Patterns 2022

El Niño–Southern Oscillation (ENSO) indicators have eased further in the past 2 weeks. Tropical Pacific sea surface temperatures have continued to warm and have been at ENSO-neutral values for the past five weeks. Trade winds are also close to average strength. However, some atmospheric indicators continue to show a La Niña-like signal, including cloudiness along the equator and the Southern Oscillation Index (SOI).

Most climate models indicate ENSO is likely to remain neutral through to August. However, some model outlooks suggest La Niña may re-form later in 2022.

Weekly sea surface temperature anomalies (Figure 1) indicate warming over the eastern half of the Indian Ocean with warming signals reducing with the monthly sea surface temperature anomalies. However, some cooler than average signals are evident along the East African coast.

The seasonal sea surface temperature anomalies indicate weak warming signals scattered over the entire Indian Ocean basin. The Indian Ocean Dipole (IOD) is currently neutral. However, the IOD index has been below zero over the past six weeks, with the latest weekly value ( $-0.49^{\circ}\text{C}$ ) below the negative IOD threshold value of  $-0.4^{\circ}\text{C}$ . However, most climate model outlooks indicate the possibility of negative IOD development over the coming months (Figure 2).



*Figure 1: Current weekly SST Anomalies (Left) and Current monthly SST Anomalies (Right)*



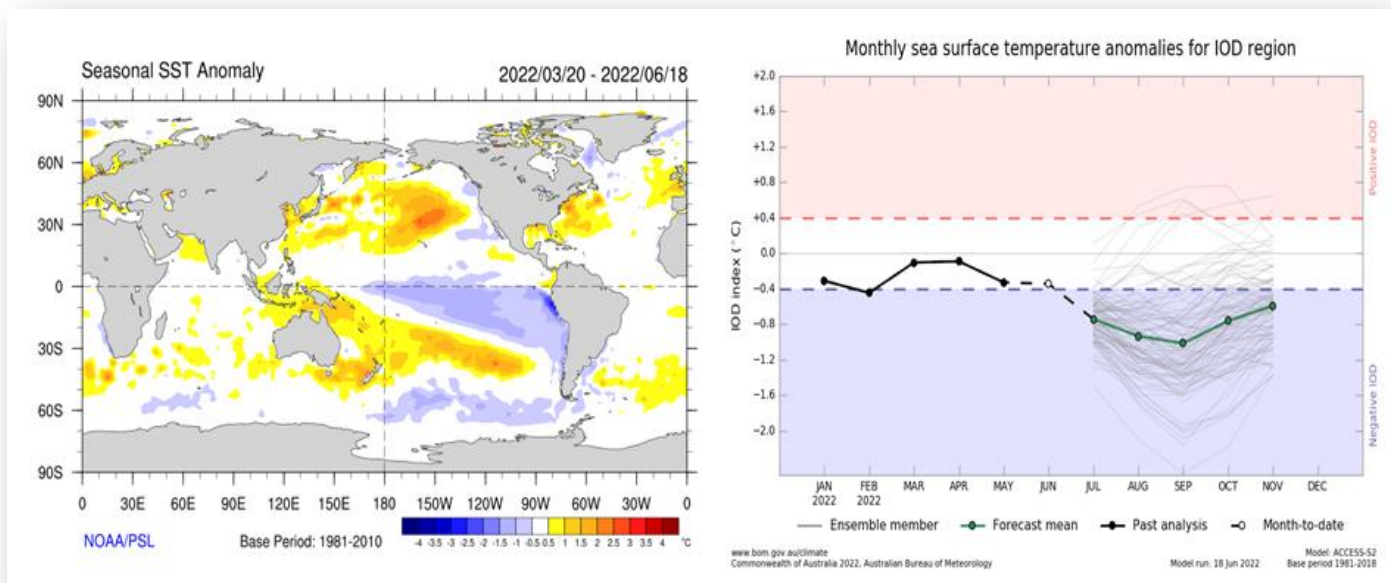
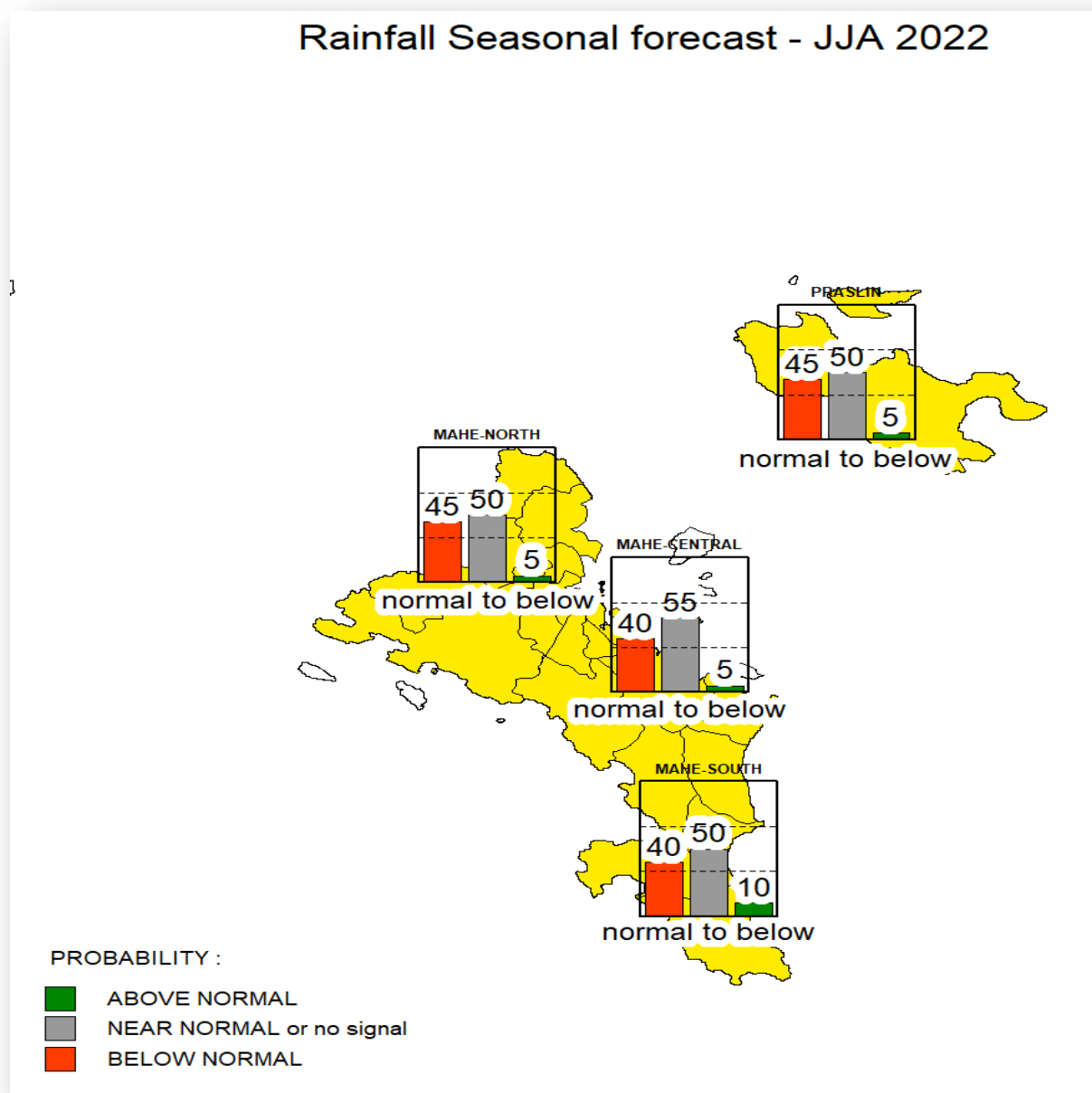


Figure 2: Current Seasonal SST Anomalies (Left) and The Indian Ocean Dipole index (Right)

#### 4. June-July-August Rainfall Seasonal Forecast 2022



Based on the prevailing conditions over the South-west Indian Ocean, the probability-based rainfall outlook for June-July-August season indicates an enhanced likelihood for Near-Normal Rainfall with a strong bias towards Below-Normal over Mahe and Inner Islands.