

Climate and Weather Bulletin

MAY 2022 Weather Review





SEYCHELLES METEOROLOGICAL AUTHORITY

May 2022 Climate and Weather Bulletin



Table of Contents

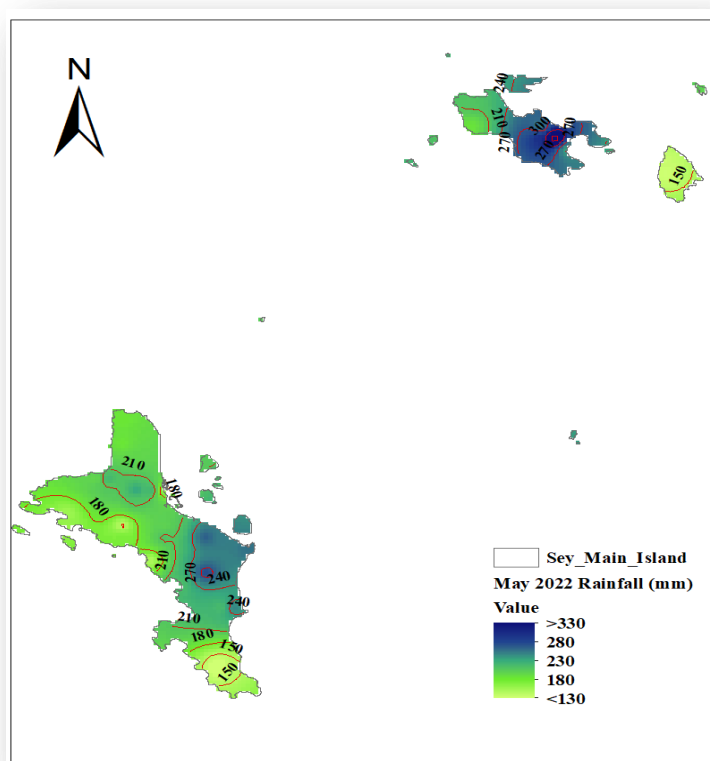
1. Introduction.....	1
2. Rainfall Performance in May 2022.....	1
2.1 Spatial Rainfall Distribution for May 2022	1
2.2 May Rainfall Totals Compared to Long-Term Mean	2
2.3 Percentage of Mean Rainfall for May 2022	3
3. Daily Weather for May 2022 at the Seychelles International Airport	5
3.1 Daily rainfall, relative humidity, maximum and minimum temperatures in May 2022	5
3.2 Daily solar Radiation, Sunshine hours, Mean Sea Level Pressure, and Surface wind speeds in May 2022	6
4. Wind Patterns in May 2022.....	7

1. Introduction

This bulletin reviews climate conditions over Mahe, Praslin, and La Digue and highlights the status of the climate systems during the month of May 2022. The basin remained under the influence of Monsoon trough pattern which was mainly concentrated to the south and occasionally strongly interrupted by the presence of tropical lows from the east. Therefore, convective activities were predominant on the lows and the convergence zone.

2. Rainfall Performance in May 2022

2.1 Spatial Rainfall Distribution for May 2022



The spatial rainfall distribution for May (Figure 1) indicates that extreme Southern and Western Mahe as well as La Digue were drier with rainfall amounts of below 180mm compared to Central Mahe and Praslin which recorded rainfall of between 180-340mm in May. The highest rainfall over Mahe amounting to 277.6 was recorded at the Prison Montagne Posee station. On Praslin Island, the maximum was 339.1 recorded at Fond Boffay station and, on La Digue, Desalination PUC station recorded a maximum of 140.8mm. An overall minimum of 128.7mm was reported at Quatre Bornes Police Station.

Figure 1: May 2022 Spatial Rainfall Distribution

When comparing the reported rainfall to the long term mean of each station (Figure 2), it is clear that most stations received rainfall amount which considerably exceeded their respective

long-term mean. However, 13 stations got slightly less than their monthly mean rainfall for May.

The basin remained majorly under the influence of weak Monsoon Trough pattern which was strongly interrupted by the presence of tropical lows along its southern edge. Therefore, convective activity was focused on the systems.

Looking at it in terms of percentages (Figure 3), again the area extending from around Montagne Posee Prison to Anse Royale on the East side, and over Praslin Island performed better. Fond Boffay station received 204.6% of its long-term mean rainfall in May.

Table 1 summarizes May's rainfall performance. 13 stations of the 37 reported Above-Normal rainfall with significantly high positive anomalies, 21 stations reported Near-Normal, and 3 stations reported Below-Normal rainfall for May. Generally, the monthly rainfall performance was Near-Normal to Below-Normal.

2.2 May Rainfall Totals Compared to Long-Term Mean

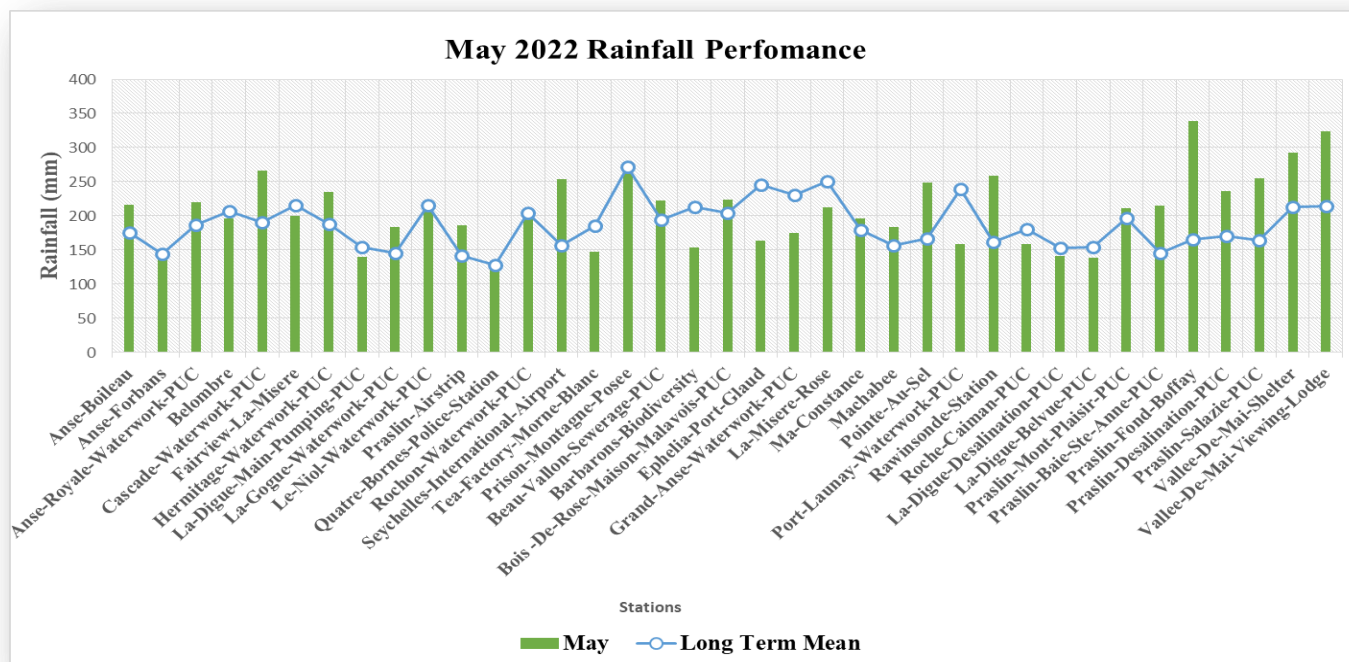
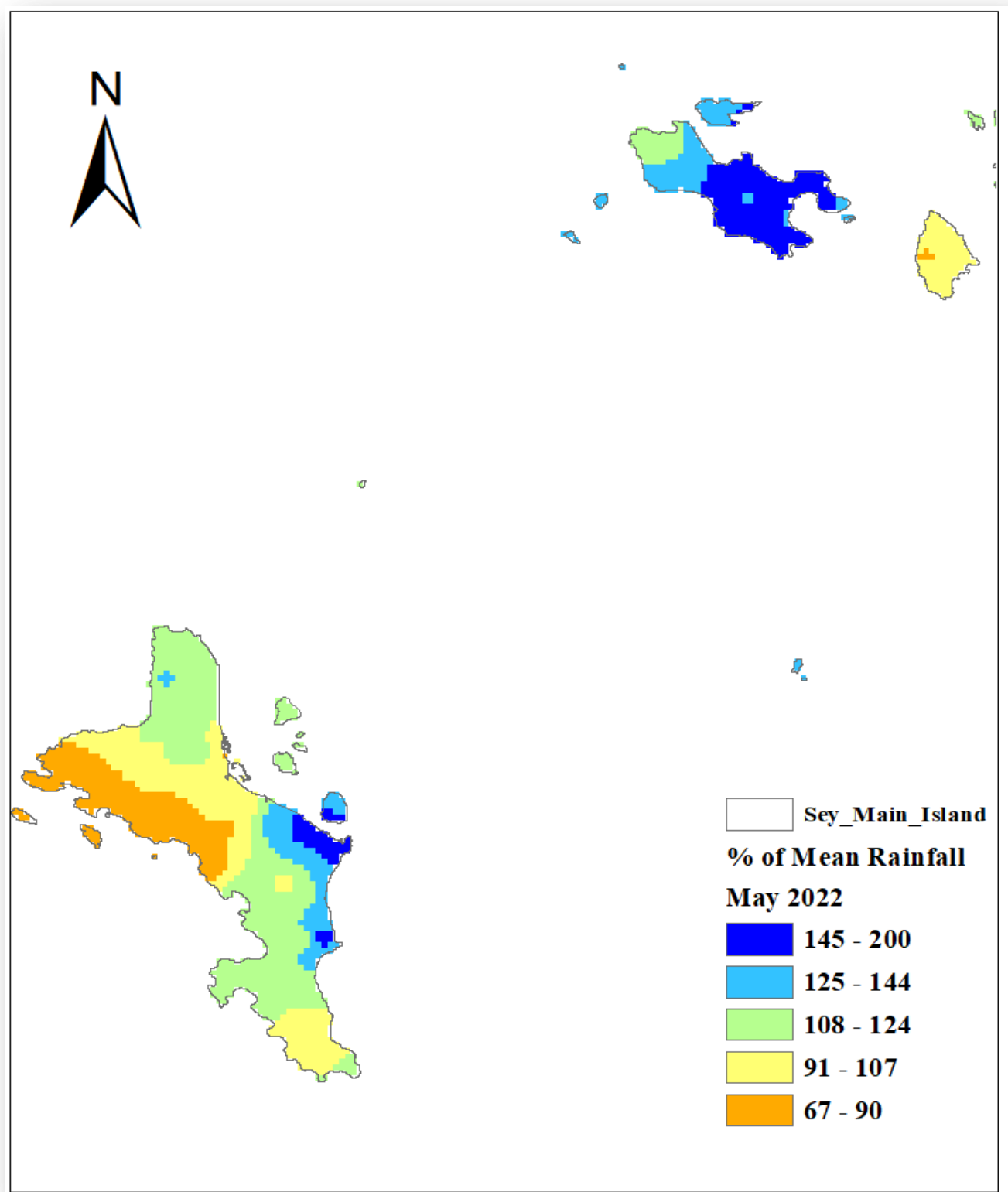


Figure 2: May 2022 rainfall totals compared to the long-term mean

2.3 Percentage of Mean Rainfall for May 2022





SEYCHELLES METEOROLOGICAL AUTHORITY

May 2022 Climate and Weather Bulletin



Figure 3: Percentage of mean Rainfall for May 2022

Table 1: Rainfall performance in May

Stations	May	Long Term Mean	BN	AN	BN?	AN?	Anomalies
Anse-Boileau	215.9	175.4	131.6	219.3	NO	NO	40.5
Anse-Forbans	148.7	144.4	108.3	180.5	NO	NO	4.3
Anse-Royale-Waterwork-PUC	219.7	186.4	139.8	233.0	NO	NO	33.3
Belombre	196.4	206.8	155.1	258.5	NO	NO	-10.4
Cascade-Waterwork-PUC	266.6	190.5	142.9	238.1	NO	YES	76.1
Fairview-La-Misere	199.5	215.3	161.5	269.1	NO	NO	-15.8
Hermitage-Waterwork-PUC	234.8	187.8	140.9	234.8	NO	YES	47.0
La-Digue-Main-Pumping-PUC	139.6	154.5	115.9	193.1	NO	NO	-14.9
La-Gogue-Waterwork-PUC	183.9	145.9	109.4	182.4	NO	YES	38.0
Le-Niol-Waterwork-PUC	209.1	215.8	161.9	269.8	NO	NO	-6.7
Praslin-Airstrip	185.6	141.3	106.0	176.6	NO	YES	44.3
Quatre-Bornes-Police-Station	128.7	127.9	95.9	159.9	NO	NO	0.8
Rochon-Waterwork-PUC	211.4	204	153.0	255.0	NO	NO	7.4
Seychelles-International-Airport	254.1	157.2	117.9	196.5	NO	YES	96.9
Tea-Factory-Morne-Blanc	147.2	185.9	139.4	232.4	NO	NO	-38.7
Prison-Montagne-Posee	277.6	271.6	203.7	339.5	NO	NO	6.0
Beau-Vallon-Sewerage-PUC	221.9	194.5	145.9	243.1	NO	NO	27.4
Barbarons-Biodiversity	153.1	213.4	160.1	266.8	YES	NO	-60.3
Bois -De-Rose-Maison-Malavois-PUC	223.9	204.1	153.1	255.1	NO	NO	19.8
Ephelia-Port-Glaud	163.4	245.8	184.4	307.3	YES	NO	-82.4
Grand-Anse-Waterwork-PUC	175	231	173.3	288.8	NO	NO	-56.0
La-Misere-Rose	212.6	249.9	187.4	312.4	NO	NO	-37.3
Ma-Constance	196.1	179.5	134.6	224.4	NO	NO	16.6
Machabee	183.6	156.8	117.6	196.0	NO	NO	26.8
Pointe-Au-Sel	248.3	166.8	125.1	208.5	NO	YES	81.5
Port-Launay-Waterwork-PUC	158.8	239.3	179.5	299.1	YES	NO	-80.5
Rawinsonde-Station	258.6	161.1	120.8	201.4	NO	YES	97.5
Roche-Caiman-PUC	159.1	180.1	135.1	225.1	NO	NO	-21.0
La-Digue-Desalination-PUC	140.8	152.6	114.5	190.8	NO	NO	-11.8
La-Digue-Belvue-PUC	138.4	154.5	115.9	193.1	NO	NO	-16.1
Praslin-Mont-Plaisir-PUC	211.3	197.1	147.8	246.4	NO	NO	14.2
Praslin-Baie-Ste-Anne-PUC	214.4	145	108.8	181.3	NO	YES	69.4
Praslin-Fond-Boffay	339.1	165.7	124.3	207.1	NO	YES	173.4
Praslin-Desalination-PUC	236.6	169.9	127.4	212.4	NO	YES	66.7
Praslin-Salazie-PUC	255	163.8	122.9	204.8	NO	YES	91.2
Vallee-De-Mai-Shelter	293	212.6	159.5	265.8	NO	YES	80.4
Vallee-De-Mai-Viewing-Lodge	323.5	214.5	160.9	268.1	NO	YES	109.0

3. Daily Weather for May 2022 at the Seychelles International Airport

3.1 Daily rainfall, relative humidity, maximum and minimum temperatures in May 2022

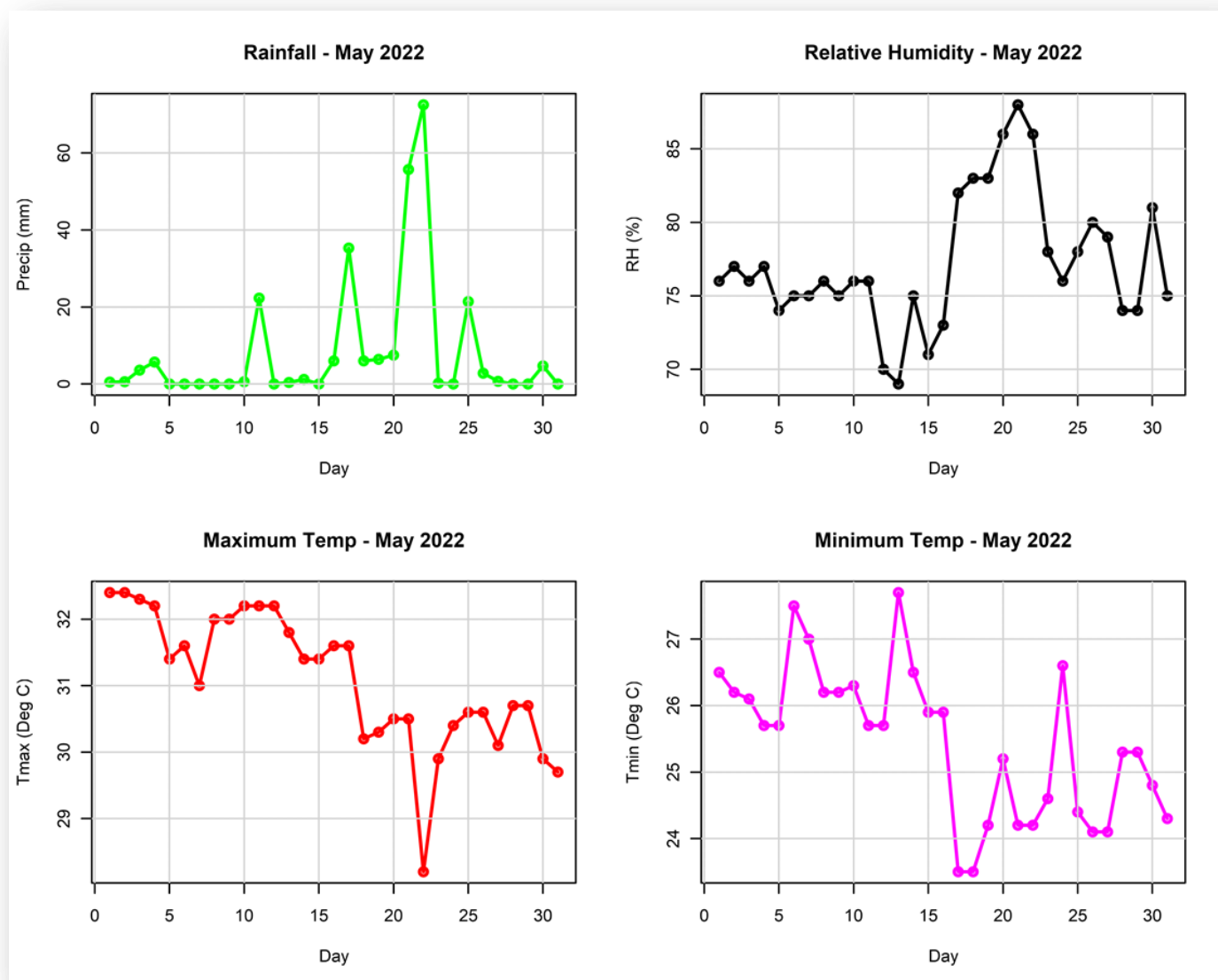


Figure 4: Daily rainfall, relative humidity, maximum and minimum temperatures in May 2022

The highest recorded daily rainfall in May at the Airport Station was 102.8mm on the 28th, with only 2 dry days during the month. The daily mean Relative Humidity was significantly high above 75% (Figure 4). Daily maximum temperature generally remained above 28.0°C for the entire month with a highest temperature of 31.2°C reported on the 1st-2nd. The minimum temperature varied between 23.0°C to 26.0°C. However, a minimum temperature of 26.6°C and 27.1°C was reported on the 22nd and 23rd respectively.

3.2 Daily solar Radiation, Sunshine hours, Mean Sea Level Pressure, and Surface wind speeds in May 2022

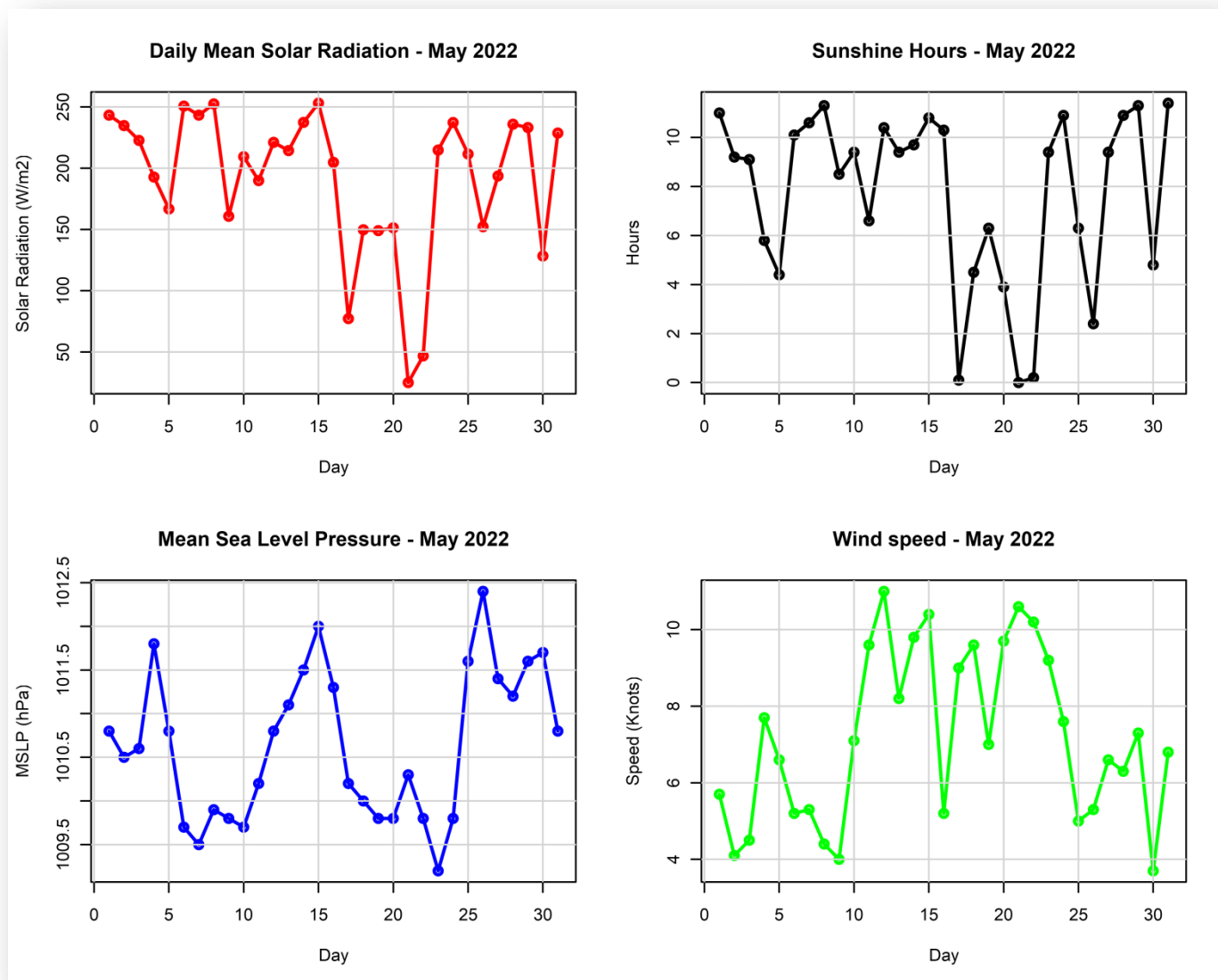


Figure 5: Daily solar Radiation, Sunshine hours, Mean Sea Level Pressure, and Surface wind speeds in May 2022

On average, the mean solar radiation during May remained mostly above 100 W/m2, and the diurnal variation closely matched the sunshine hours. The wind speeds were light to moderate, ranging between 4-10 Knots depicting an increasing trend while the mean sea level pressure showed a negative trend with a range of 1008.4-1012.5hPa (Figure 5).

4. Wind Patterns in May 2022

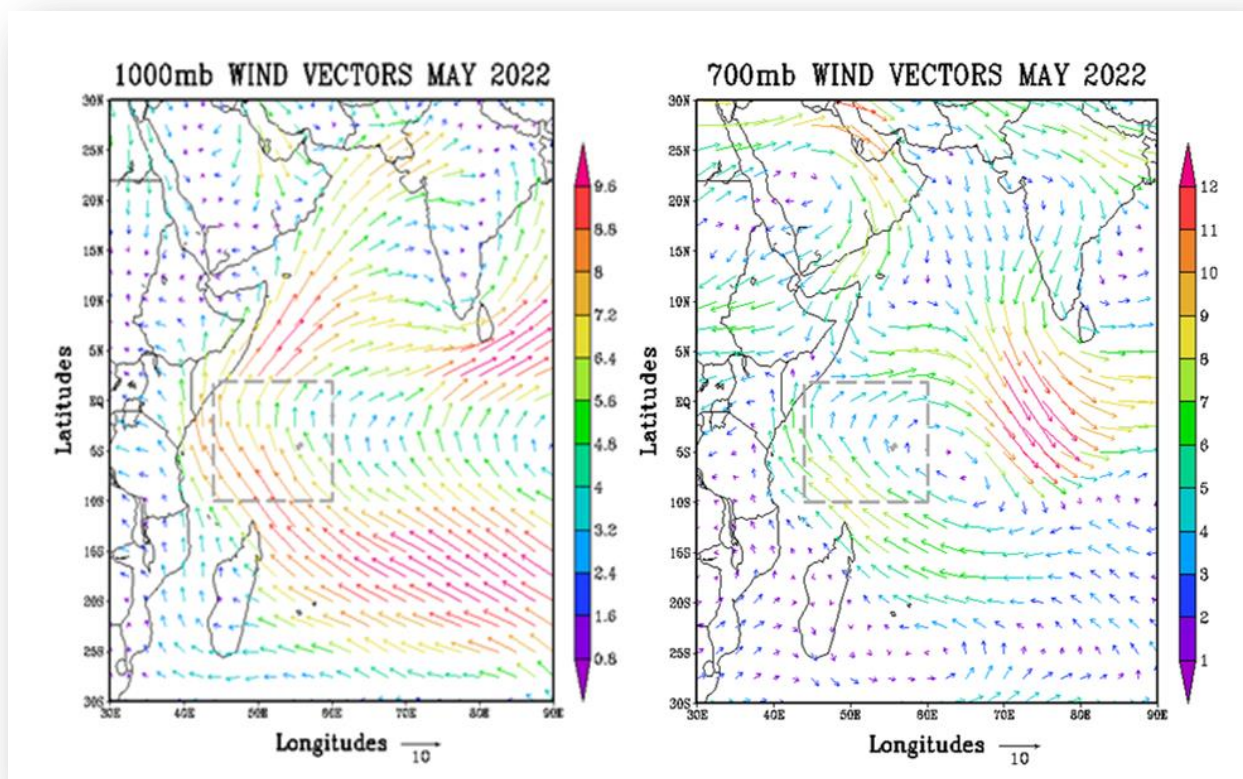


Figure 6: Surface wind flow (left) and wind flow at 700mb (right)

The analysis (Figure 6) indicates that the winds near the surface were averagely moderate South-easterlies with the speed ranging between 4.8m/s and 6.4m/s. The winds to the South-west of Mahe were strong and mainly originating from the Mascarene High. The trough axis extended mainly to the north. At the mid-levels, the South-easterly winds were quite light ranging between 2m/s to 4m/s. A cyclonic circulation persisted to the immediate east of Mahe.