

Seasonal Climate Outlook



JAS 2022 Weather Review





SEYCHELLES METEOROLOGICAL AUTHORITY

July-August-September (JAS) 2022 Seasonal Climate



Table of Contents

1. April-May-June (AMJ) 2022 Performance	1
2. May-June-July (MJJ) 2022 Performance	1
3. Oceanic Patterns 2022	2
4. July-August-September Rainfall Seasonal Forecast 2022.....	4



SEYCHELLES METEOROLOGICAL AUTHORITY

July-August-September (JAS) 2022 Seasonal Climate



1. April-May-June (AMJ) 2022 Performance

Table 1 below shows that the rainfall recorded during the April-May-June (AMJ) 2022 season was strongly Above-Normal over all areas. However, Tea Factory Morne Blanc station reported Near-above rainfall.

Table 1: April-May-June (AMJ) 2022 Performance

Stations	AMJ	Long Term Mean	BN	AN	BN?	AN?	Anomalies
Anse-Boileau	835.0	493.4	370.0	616.7	NO	YES	341.6
Anse-Forbans	592.5	407.3	305.5	509.1	NO	YES	185.2
Anse-Royale-Waterwork-PUC	812.6	485.7	364.3	607.1	NO	YES	326.9
Belombre	885.5	565.0	423.8	706.3	NO	YES	320.5
Cascade-Waterwork-PUC	1002	561.1	420.8	701.3	NO	YES	440.9
Fairview-La-Misere	831.6	628.5	471.4	785.7	NO	YES	203.1
Hermitage-Waterwork-PUC	941.9	509.8	382.3	637.2	NO	YES	432.1
La-Gogue-Waterwork-PUC	629.5	380.5	285.4	475.7	NO	YES	249.0
Le-Niol-Waterwork-PUC	961.8	631.1	473.3	788.9	NO	YES	330.7
Praslin-Airstrip	626.7	362.3	271.8	452.9	NO	YES	264.4
Quatre-Bornes-Police-Station	499.6	352.2	264.2	440.3	NO	YES	147.4
Rochon-Waterwork-PUC	884.4	601.9	451.4	752.4	NO	YES	282.5
Seychelles-International-Airport	894.5	461.0	345.7	576.2	NO	YES	433.5
Tea-Factory-Morne-Blanc	621.7	534.7	401.0	668.3	NO	NO	87.0

2. May-June-July (MJJ) 2022 Performance

Table 2 below shows how the May-June-July (MJJ) 2022 season is performing so far, two months into the season. 7 stations of the 14 stations considered for seasonal forecasting indicate drier than average conditions with some strong negative anomalies with the remaining 7 indicating wetter than average rainfall.

Table 2: 2. May-June-July (MJJ) 2022 Performance

STATIONS	MAY TOTAL	JUNE TOTAL	MAY +JUNE	MJJ LONG TERM MEAN	ANOMALIES
Anse-Boileau	215.9	215.9	431.8	401.22	30.6
Anse-Forbans	148.7	148.7	297.4	327.99	-30.6
Anse-Royale-Waterwork-PUC	219.7	219.7	439.4	388.08	51.3
Belombre	196.4	196.4	392.8	546.96	-154.2
Cascade-Waterwork-PUC	266.6	266.6	533.2	470.65	62.6
Fairview-La-Misere	199.5	199.5	399	546.72	-147.7
Hermitage-Waterwork-PUC	234.8	234.8	469.6	411.04	58.6
La-Gogue-Waterwork-PUC	183.9	183.9	367.8	295.85	71.9
Le-Niol-Waterwork-PUC	209.1	209.1	418.2	596.42	-178.2
Praslin-Airstrip	185.6	185.6	371.2	291.25	79.9
Quatre-Bornes-Police-Station	128.7	128.7	257.4	304.42	-47.0
Rochon-Waterwork-PUC	211.4	211.4	422.8	516.62	-93.8
Seychelles-International-Airport	254.1	254.1	508.2	359.22	149.0
Tea-Factory-Morne-Blanc	147.2	147.2	294.4	460.71	-166.3

3. Oceanic Patterns 2022

El Niño–Southern Oscillation (ENSO) ocean indicators are at neutral levels. However, some atmospheric indicators, such as the Southern Oscillation Index, show a residual La Niña-like signal. Trade winds have recently re-strengthened in the central to western Pacific, partially in response to Madden–Julian Oscillation activity. Most climate models indicate ENSO is likely to remain neutral through to August.

Weekly sea surface temperature anomalies (Figure 1) indicate weak warming signals over the eastern half of the Indian Ocean with the warming signals reducing significantly with the monthly sea surface temperature anomalies. However, some cooler than average signals are evident along the East African coast and to the immediate North-east of Madagascar.

The seasonal sea surface temperature anomalies indicate very weak warming signals scattered over the entire Indian Ocean basin. The Indian Ocean Dipole (IOD) index has been very close to or exceeded negative IOD thresholds (i.e. at or below $-0.4\text{ }^{\circ}\text{C}$) over the past six weeks. If, as forecast, negative IOD thresholds are exceeded for the next fortnight, 2022 will be considered a negative IOD year. All climate model outlooks surveyed indicate negative IOD conditions are likely through to October (Figure 2).

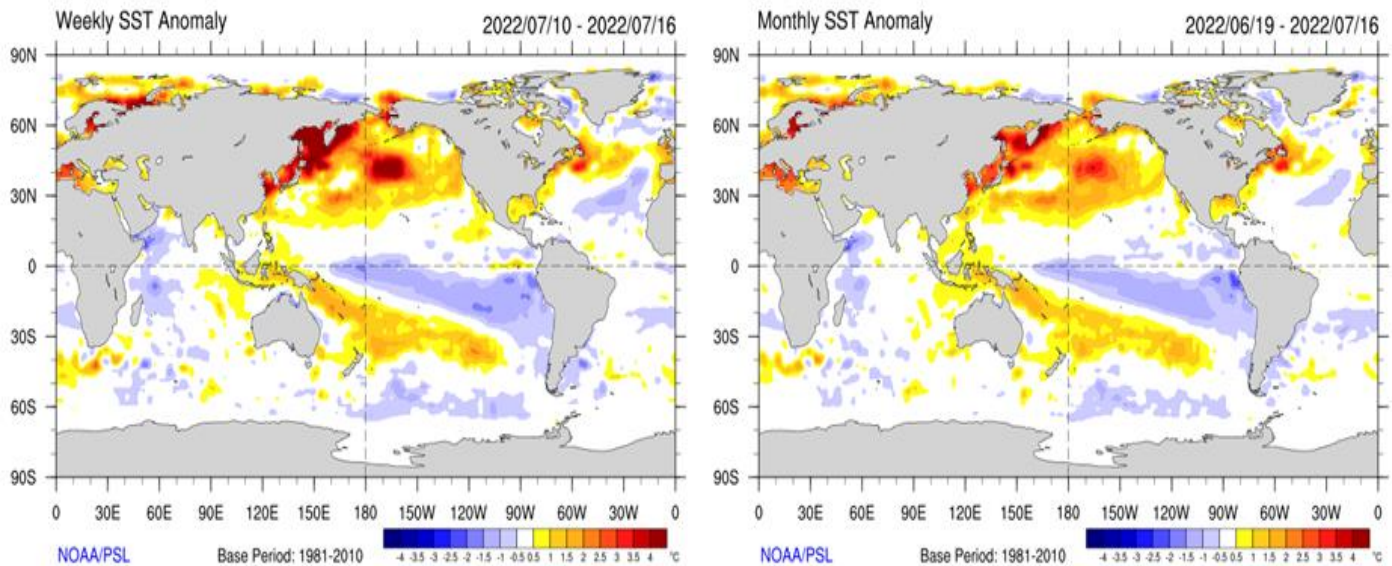


Figure 1: Current weekly SST Anomalies (Left) and Current monthly SST Anomalies (Right)

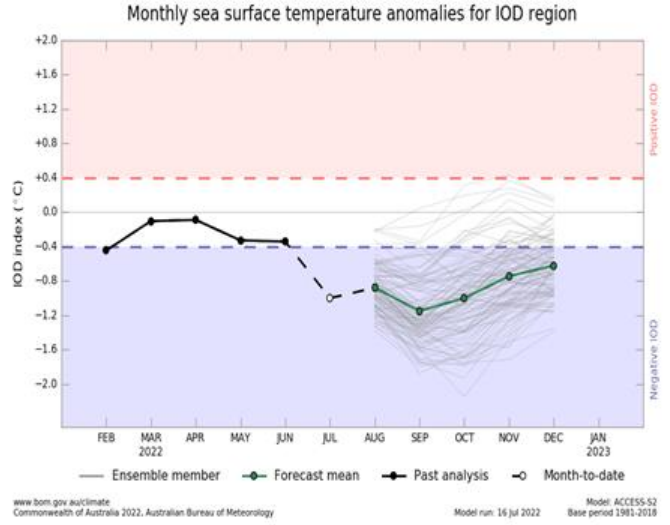
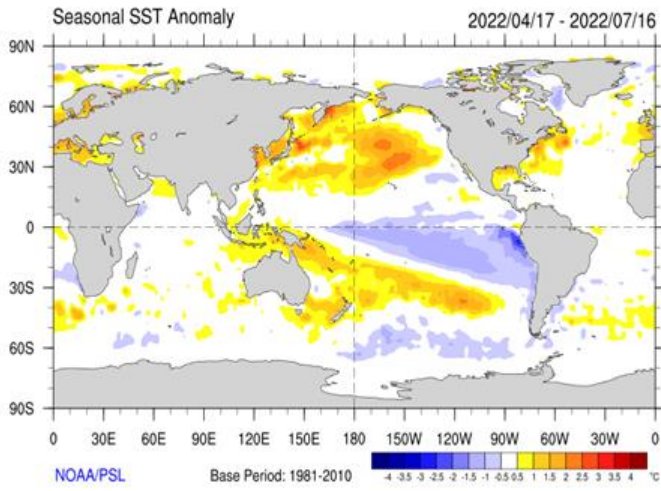
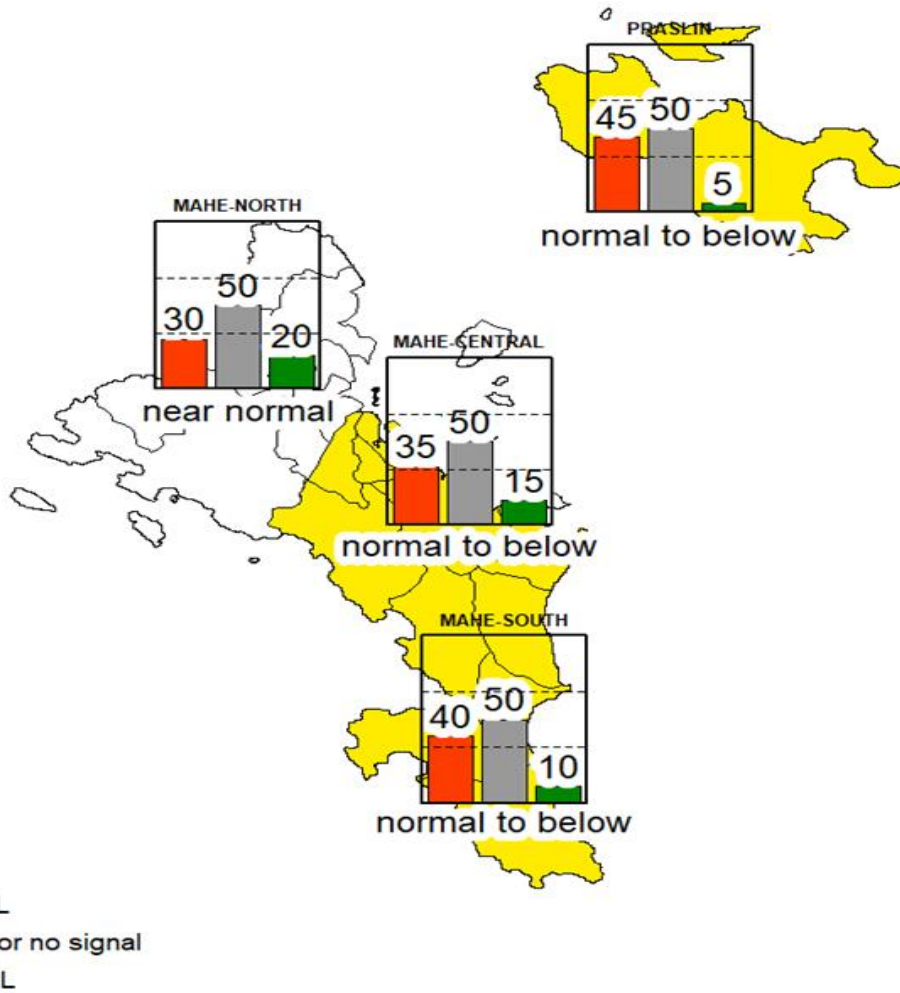


Figure 2: Current Seasonal SST Anomalies (Left) and The Indian Ocean Dipole index (Right)

4. July-August-September Rainfall Seasonal Forecast 2022

Rainfall Seasonal forecast - JAS 2022



Based on the prevailing conditions over the South-west Indian Ocean, the probability-based rainfall outlook for July-August-September season indicates an enhanced likelihood for Near-Normal Rainfall with a strong bias towards Below-Normal over Mahe and Inner Islands.