



Period: March 2026

Vol.1, Issue No: 1

Date of Issue: 28th April 2026

1. SITUATION OVERVIEW

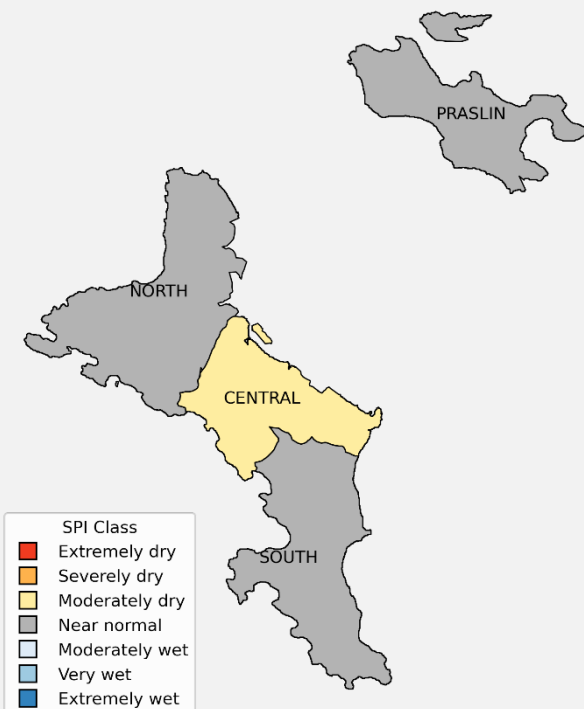


Figure 1: SPI-3 performance map for January to March (JFM-2026) season

The analysis of SPI-3 conditions over Mahe and the inner islands indicates that the start of dry conditions was first observed during the February-March-April (FMA) 2025 season. These conditions intensified over the course of the year, with drought severity reaching severely dry to extremely dry levels between July-August-September (JAS) and September-October-November (SON) 2025.

The recent SPI-3 assessment for the January-February-March (JFM) 2026 season indicates near-normal conditions across both Mahe and Praslin. However, the central region of Mahe remained under moderately dry conditions. Furthermore, Praslin shows a slight improvement in rainfall conditions, reflected by slightly positive SPI values during the December-February (DJF) 2025 and JFM 2026 seasons.

The prolonged dry conditions experienced throughout much of 2025 had significant impacts, including reduced river flow levels. This reduction affected water availability for treatment by the service provider.

For detailed interpretation of the maps and graphs, grey denotes near-normal SPI-3 values, while orange and blue shades represent dry and wet (moderate to extreme) conditions, respectively.



2. Northern Zone - SPI-3 Months

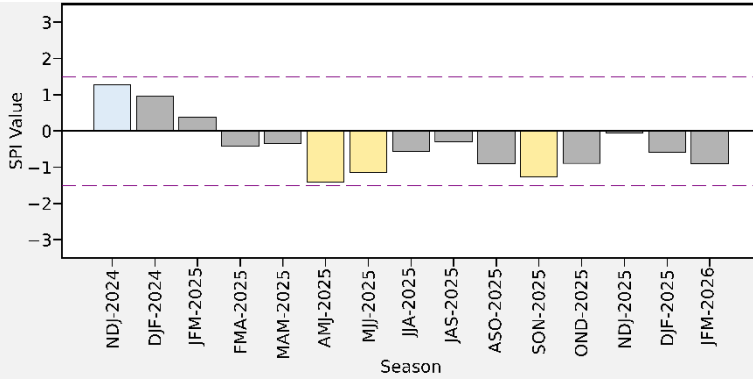


Figure 2: SPI-3 months plot for Northern zone from November 2024 to March 2026

In the northern zone, SPI-3 values turned negative during the February-March-April (FMA) 2025 season, indicating the start of drier conditions. Although SPI-3 values remained mostly negative from FMA 2025 to January-February-March (JFM) 2026, conditions were generally within the near-normal range. However, periods of moderately dry conditions were observed during April-May-June (AMJ) 2025, June-July-August (JJA) 2025, and September-October-November (SON) 2025 seasons.

3. Central Zone - SPI-3 Months

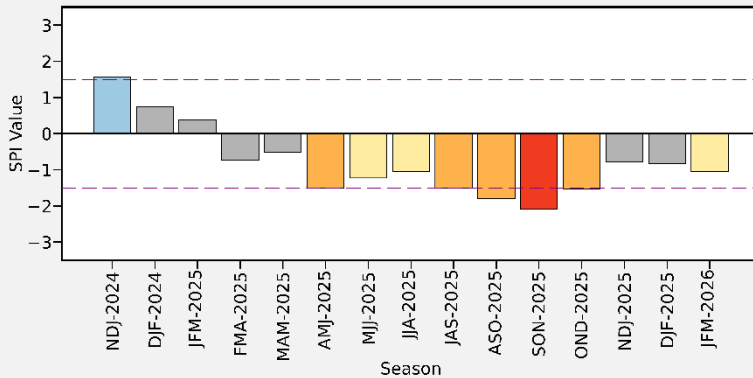


Figure 2: SPI-3 months plot for Central zone from November 2024 to March 2026

In the central zone, SPI-3 values turned negative during the February-April (FMA) 2025 season, indicating the start of dry conditions. This zone experienced seven consecutive dry seasons, ranging from moderately dry to extremely dry. The peak of dryness occurred during September-October-November (SON) 2025, when SPI-3 values reached the extremely dry category. A slight improvement in conditions was observed during November-December-January (NDJ) and December-January-February (DJF) 2025, with SPI-3 values increasing toward the near-normal range. However, dry conditions re-intensified thereafter, with SPI-3 values returning to the moderately dry category during January-February-March (JFM) 2026 season.



4. Southern Zone - SPI-3 Months

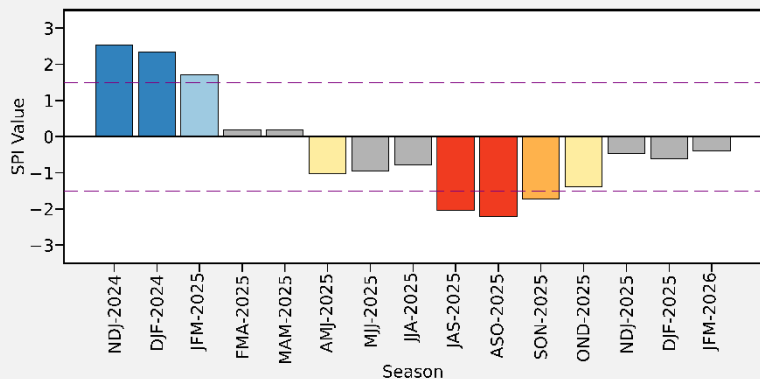


Figure 2: SPI-3 months plot for Southern zone from November 2024 to March 2026

For the southern zone of Mahe, the start of dry conditions was first observed during the AMJ 2025 season, with SPI-3 values reaching the moderately dry category. Throughout the year, SPI-3 values remained predominantly negative, indicating persistent dry conditions.

Two consecutive extremely dry seasons were recorded during JAS and August-October (ASO) 2025, with peak dryness occurring in ASO 2025. Following this peak, conditions showed a gradual improvement toward early 2026. SPI-3 values improved from extremely dry to moderately dry, nearing normal conditions by JFM 2026.

5. Praslin Island - SPI-3 Months

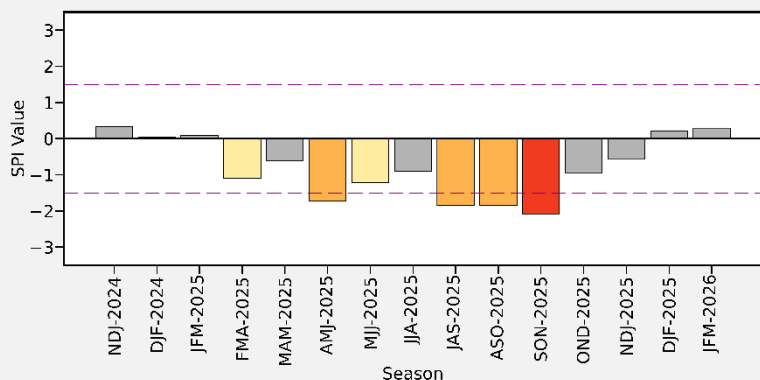


Figure 2: SPI-3 months plot for Praslin Island from November 2024 to March 2026

Note: Above 1.5 (wet) / Below -1.5 (dry) severe to extreme conditions marked by the horizontal purple dashed lines

FMA 2025 marked the start of dry conditions in Praslin Island. During this season, conditions were moderately dry. Thereafter, SPI-3 values remained predominantly negative until NDJ 2025, before improving and becoming slightly positive from DJF 2025 to 2026, indicating a transition toward near-normal conditions.

Further analysis shows that the seasons of AMJ, JAS, and ASO 2025 were characterized by severely dry conditions, while the SON represented period of peak of dryness, reaching the extremely dry category.

**Table1: SPI values and interpretation**

SPI Value Range	Interpretation/Category
≥ 2.0	Extremely wet
1.5 to 1.99	Very wet
1.0 to 1.49	Moderately wet
-0.99 to 0.99	Near normal
-1.0 to -1.49	Moderately dry
-1.5 to -1.99	Severely dry
≤ -2.0	Extremely dry

6. Brief overview of the indicator

The World Meteorological Organization (WMO) has recommended the Standardized Precipitation Index (SPI) to be used by all National Meteorological and Hydrological Services around the world to characterize meteorological droughts.

The Standardized Precipitation Index (SPI) is a widely used statistical indicator for quantifying precipitation anomalies and monitoring meteorological drought conditions. The SPI calculation for any location is based on the long-term precipitation record for a desired period. This long-term record is fitted to a probability distribution, which is then transformed into a normal distribution so that the mean SPI for the location and desired period is zero. The SPI can be computed over periods ranging from 1-month to 12-months or longer. Depending on the drought impact in question, SPI values for 3 months or less might be useful for basic drought monitoring, values for 6 months or less for monitoring agricultural impacts and values for 12 months or longer for evaluating hydrological impacts.

Note that the name of the indicator is usually modified to include the accumulation period, usually expressed in months. Thus, SPI-3 and SPI-12, for example, refer to accumulation periods of three and twelve months, respectively.

Positive SPI values indicate greater than median precipitation, and negative values indicate less than median precipitation. Drought, according to the SPI, starts when the SPI value is equal or below -1.0 and ends when the value becomes positive.

Note: For operational purposes, the WMO guidance baseline of 1991-2020 is used as a reference period for the computation of the SPI.

SEYCHELLES METEOROLOGICAL AUTHORITY

Seychelles International Airport

P O Box 1604, Victoria, Mahé, Republic of Seychelles

Telephone: (248) 4670700/711 /718

E-mail: info@meteo.sc Web: www.meteo.sc



CLIMATE EXTREMES MONITORING BULLETIN: DROUGHT AND EXTREME RAINFALL

SMA/CLI/FM/013

Created by: T. Nomenjanahary

Revision Number: 0 (NEW)

Page 5 of 5

7. Acronyms

SPI: Standardized Precipitation Index

WMO: World Meteorological Organization

JFM: January-February-March

FMA: February-March-April

MAM: March-April-May

AMJ: April-May-June

MJJ: May-June-July

JJA: June-July-August

JAS: July-August-September

ASO: August-September-October

SON: September-October-November

OND: October-November-December

NDJ: November-December-January

DJF: December-January-February

8. References

o McKee, T.B., N.J. Doesken and J. Kleist. 1993. *The relationship of drought frequency and duration to time scale. In: Proceedings of the Eighth Conference on Applied Climatology, Anaheim, California, 17–22 January 1993. Boston, American Meteorological Society, 179–184.*

o World Meteorological Organization. 2012. *Standardized Precipitation Index User Guide. (M. Svoboda, M. Hayes and D. Wood). WMO-No. 1090. Geneva. ISBN 978-92-63-11091-6. 16p.*